



NetLight



Goran Car



NetLight – Što je to?

- Program za nadzor WAN mreža
 - Web bazirani, konfigurabilni prikaz mreže;
 - Razvrstavanje poslovno odvojenih dijelova mreže u zasebne cjeline;
 - Evidentiranje mrežnih događaja uz automatsko generiranje statističkih izvješća;
 - Klasificiranje i obrada događaja u mreži te primjereno izvješćivanje i alarmiranje;
 - Nadzor 24/7/365
 - Puna podrška i održavanje

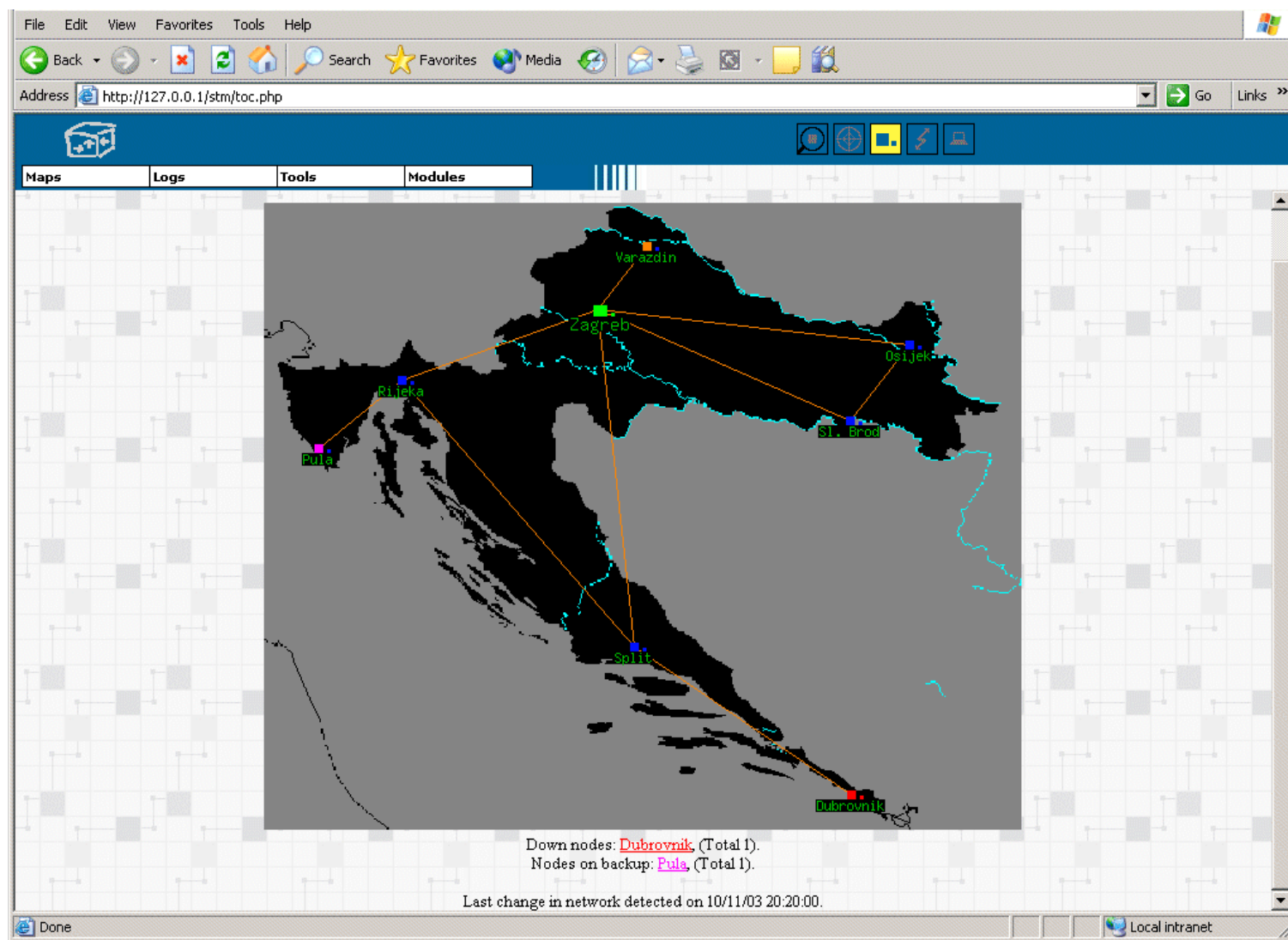
NetLight – Nastanak

- 2000.
 - Nastao iz nužde jer tržišno dostupni sustavi nisu mogli odgovoriti na postavljene zahtjeve
 - Razvijen na Unix-u, kao add-on modul za TME10 Framework (NetView)
- 2001. - NeMo
 - Evoluirao u samostalan program za nadzor na Windows 2000 platformi uz zadržavanje dobrih unix osobina (skalabilnost, stabilnost)
 - Razvoj vođen zahtjevima tehničkog mrežnog osoblja kao i željama managementa
- 2004 - 2006. – NetLight
 - Proširenje funkcionalnosti


Glavne karakteristike

- Jednostavnost korištenja;
- Grafičko i statističko praćenje dostupnosti;
- Praćenje rada i troškova povremenih pričuvnih veza;
- Praćenje MIB varijabli (promet na vezama, opterećenje procesora, zauzetost memorije, ...);
- Praćenje i alarmiranje kod prijelaza korisnički definiranih pragova MIB varijabli;
- Alarmiranje putem elektroničke pošte;
- Praćenje rada DLSw sesija (npr. za bankomate);
- Syslog;

Grafički prikaz mreže



Bilježenje događaja putem servisa


Maps Logs Tools Modules

ALL EVENTS LOG:

Time period:

From: on

To: on


Maps Logs Tools Modules

[Back to map](#)
[Main](#)

Node data
[Events](#)
[Statistics](#)
[GraphStat](#)
[MIBGraph](#)

Node Tools
[Telnet](#)
[Ping](#)
[Traceroute](#)
[SysInfo](#)
[Interfaces](#)
[RouteTable](#)
[Addresses](#)

Time period:

From: on

To: on

[Online](#)

21/02/2005 10:02:12	Node disconnected from	21/02/2005 10:24:54	10.75.10.190	Node Down.
21/02/2005 09:59:30	Node on Backup.	21/02/2005 10:24:54	10.75.231.1	Node Down.
20/02/2005 13:25:28	Node disconnected from	21/02/2005 10:23:24	10.75.10.190	Node Up.
20/02/2005 13:22:18	Node on Backup.	21/02/2005 10:23:24	10.75.231.1	Node Up.
19/02/2005 22:58:27	Node disconnected from	21/02/2005 10:20:47	10.72.87.1	Node Down.
19/02/2005 22:55:49	Node on Backup.	21/02/2005 10:20:22	10.65.31.1	Node on Backup.
18/02/2005 20:18:02	Node Up.	21/02/2005 10:20:22	10.72.87.1	Node disconnected from Backup.
18/02/2005 20:17:20	Node Down.	21/02/2005 10:19:56	10.65.31.1	Node Up.
18/02/2005 20:04:06	Node Up.	21/02/2005 10:19:25	10.65.31.1	Node Down.
18/02/2005 20:03:22	Node Down.	21/02/2005 10:18:46	10.65.31.1	Node disconnected from Backup.
18/02/2005 10:33:06	Node disconnected from	21/02/2005 10:18:45	10.75.231.1	Node Down.
18/02/2005 10:29:53	Node on Backup.	21/02/2005 10:18:45	10.75.10.190	Node Down.
18/02/2005 09:44:47	Node disconnected from Backup.	21/02/2005 10:17:22	10.75.10.190	Node Up.
18/02/2005 09:42:06	Node on Backup.			
17/02/2005 13:59:31	Node disconnected from Backup.			
17/02/2005 13:56:51	Node on Backup.			
17/02/2005 13:52:28	Node Up.			
17/02/2005 13:45:50	Node Down.			
17/02/2005 13:40:14	Node Up.			

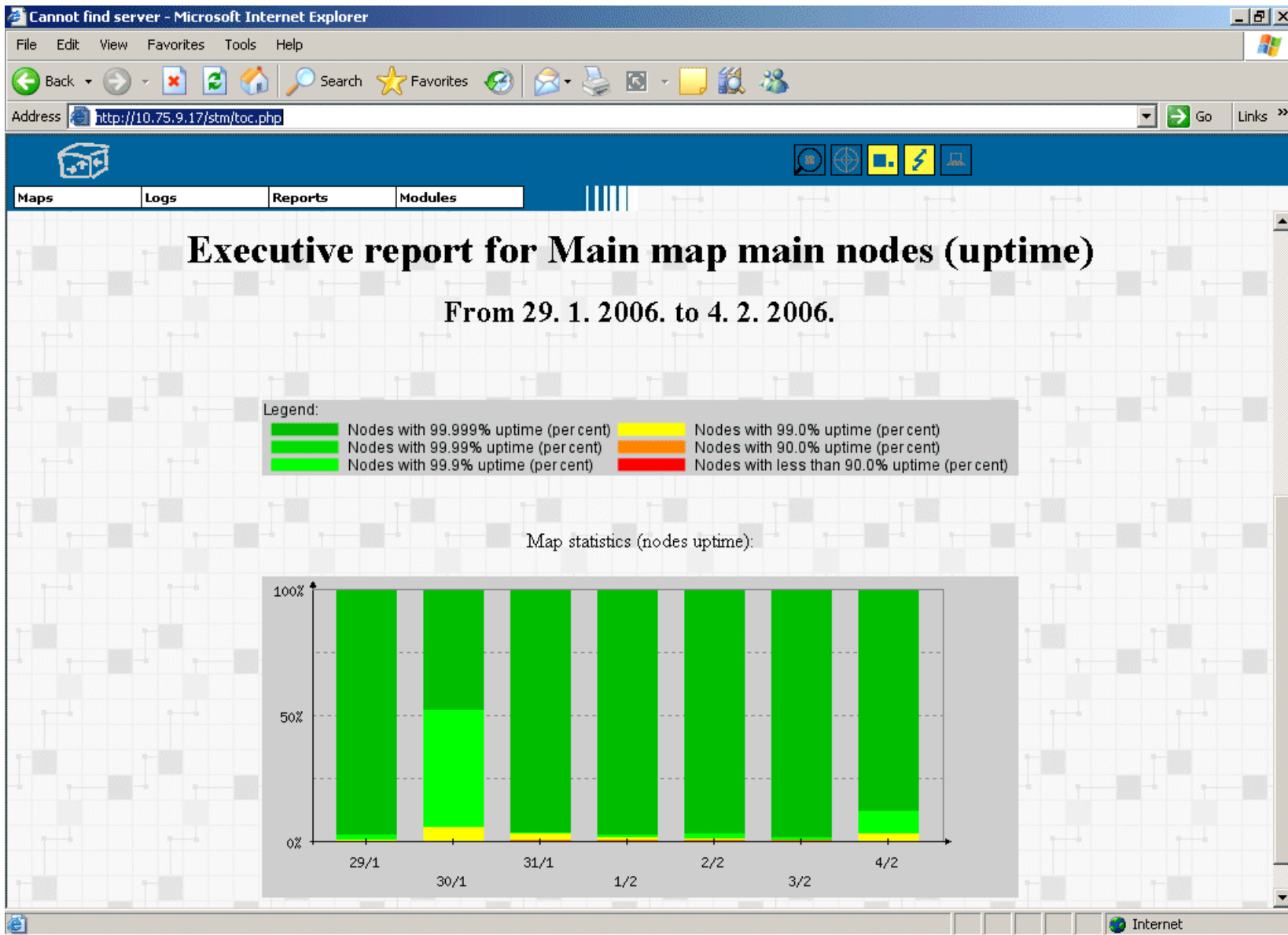
Izvještaji (1/3)

Operative report for Main map main nodes

From 1. 1. 2006. to 31. 1. 2006.

Node:				Up	Down	Number of fall-			MDT	Backup [%]	Backup Time	Number of Backups	MBT
Date:	Up [%]	Down Time	Number of fall-outs	MDT	Backup [%]	Backup Time	Number of Backups	MBT					
									0:02:02	0.00	0:00:00	0	0:00:00
									0:02:04	0.46	3:24:21	8	0:25:32
									0:01:45	0.46	3:27:20	5	0:41:28
									0:01:36	0.48	3:35:09	6	0:35:51
									0:01:39	0.50	3:45:43	9	0:25:04
									0:06:16	1.85	13:47:26	11	1:15:13
20. 2. 2005.	100.0	0:00:00	0	0:00:00	0.2	0:03:10	1	0:03:10					
20. 2. 2005.	100.0	0:00:00	0	0:00:00	0.2	0:03:10	1	0:03:10					
19. 2. 2005.	100.0	0:00:00	0	0:00:00	0.2	0:02:38	1	0:02:38					
18. 2. 2005.	99.9	0:01:26	2	0:00:43	0.4	0:05:54	2	0:02:57					
17. 2. 2005.	97.7	0:33:07	3	0:11:02	0.2	0:02:40	1	0:02:40					
16. 2. 2005.	89.8	2:26:16	1	2:26:16	0.7	0:10:18	2	0:05:09					
15. 2. 2005.	100.0	0:00:00	0	0:00:00	0.0	0:00:00	0	0:00:00					
14. 2. 2005.	99.9	0:01:47	1	0:01:47	0.9	0:12:56	1	0:12:56					
13. 2. 2005.	100.0	0:00:00	0	0:00:00	0.0	0:00:00	0	0:00:00					

Izvještaji (2/3)



Izvještaji (3/3)

IT MANAGER REPORT GENERATOR

List of available maps:

Show report for:

Main node

Secondary node

Time period:

Predefined: last month, last week, or 1

From:

To:

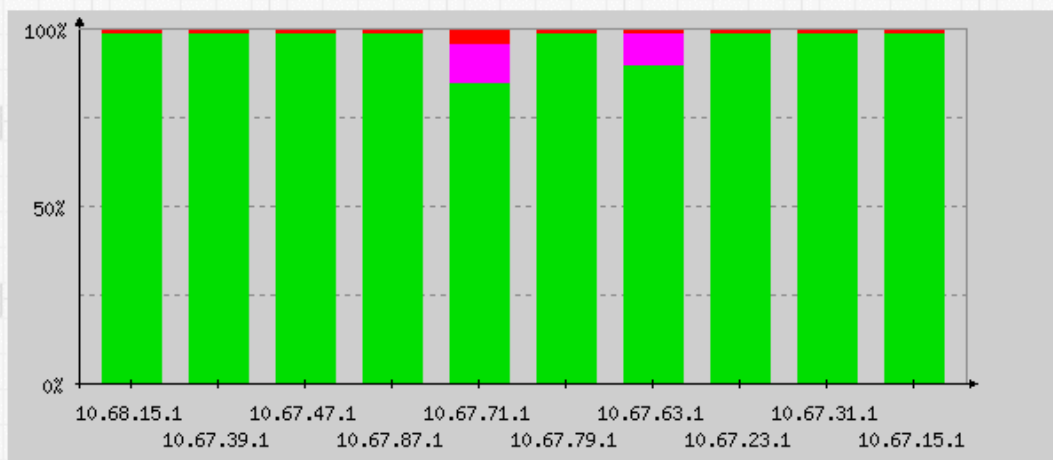
IT Manager report for Main map main nodes

From 29. 1. 2006. to 4. 2. 2006.

Legend:

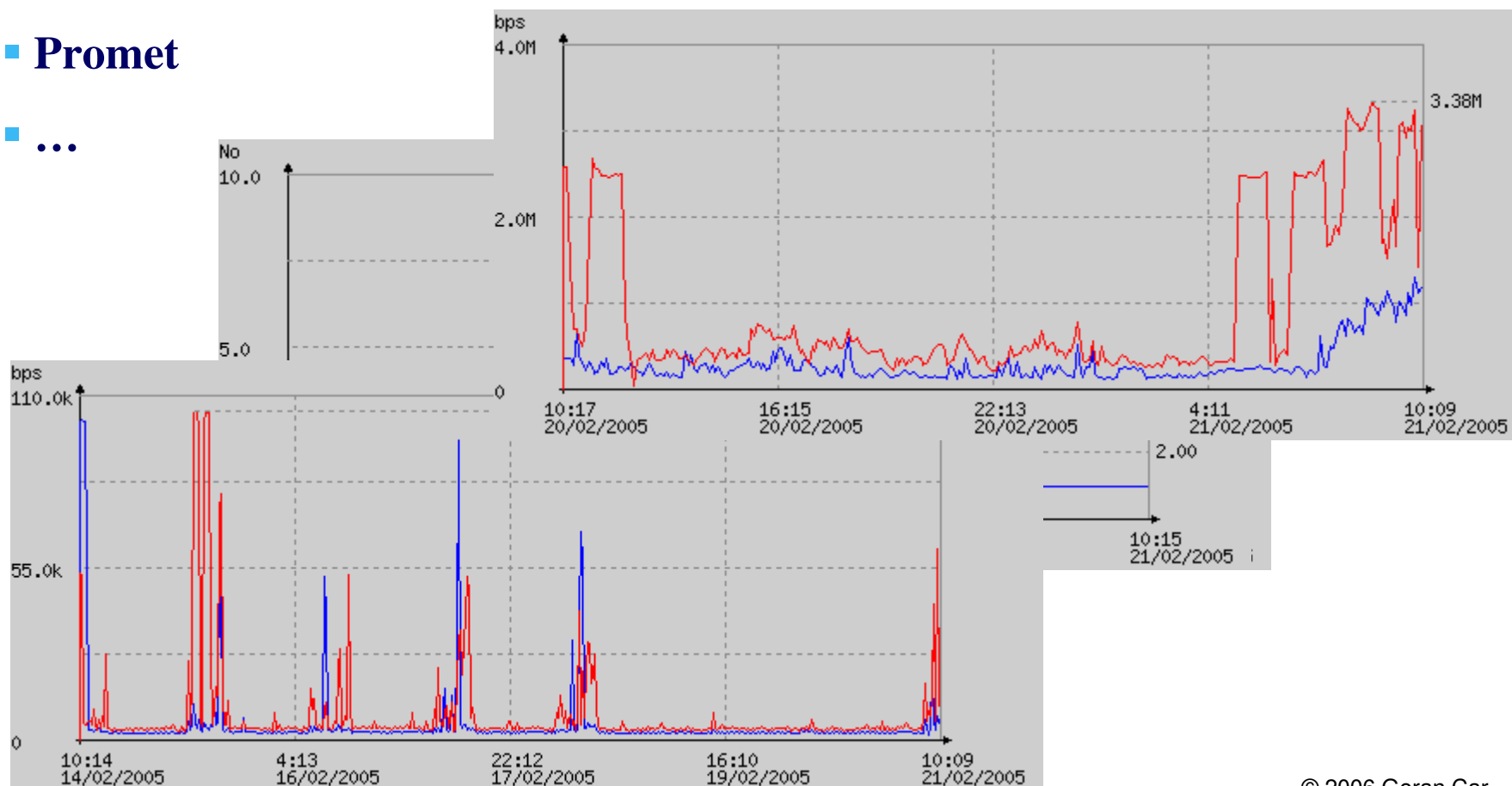
■ Up time ■ Up time over backup line(s) ■ Down time

Nodes up times (per cent):



Praćenje resursa

- Iskorištenost CPU (%)
- Broj aktivnih ISDN kanala
- Promet
- ...



Praćenje prelaska pragova

The screenshot displays the NetLight web interface in Microsoft Internet Explorer. The browser address bar shows `http://10.75.9.17/stm/toc.php`. The interface includes a navigation menu with 'Maps', 'Logs', 'Tools', and 'Modules'. A 'THRESHOLD MONITOR LOG' section is visible, showing a list of threshold events with columns for time and description. An email client overlay is positioned in the foreground, showing a list of folders (Inbox, Drafts, Sent, etc.) and a table of email messages. The selected email is from 'NetLight' with the subject 'NetLight Threshold alarm message!'. The email body contains the following text:

From: NetLight@netlight.com.hr To: mreze_odrzavanje
 Subject: NetLight Threshold alarm messa... cc:

This is NetLight Threshold alarm message!

Time: 8:55:58, 6. 2. 2006.
 Threshold exceeded for monitor name 10.72.159.1 - Ulazni promet sa KC 64kbps.
 Exceeded value is 52720 bps.

SNMP alati

The screenshot shows the NetLight web interface in Microsoft Internet Explorer. The browser address bar shows `http://10.75.9.17/stm/toc.php`. The page title is "NetLight - Microsoft Internet Explorer". The interface has a navigation menu with "Maps", "Logs", "Tools", and "Modules". The main content area is titled "INTERFACES SNMP DATA FOR:" and contains a form with "Address:" and "Community:" fields, and a "Submit" button. Below the form is a table of interface data. On the left side, there are several menu items: "Back to map", "Main", "Node data", "Events", "Statistics", "GraphStat", "MIBGraph", "Node Tools", "Telnet", "Ping", "Traceroute", "SysInfo", "Interfaces", "RouteTable", and "Addresses".

ifIndex	Admin	Oper	Type	MTU	Description	Speed	Address	Netmask
1	up	up	ethernetCsmacd	1500	FastEthernet0/0	100M	10.75.160.1	255.255.255.0
2	up	up	frameRelay	1500	Serial0/0	128k		
3	up	5	77	1500	BRI0/0	16k		
4	up	5	ppp	1500	BRI0/0:1	64k		
5	up	5	ppp	1500	BRI0/0:2	64k		
6	down	down	ethernetCsmacd	1500	FastEthernet0/1	100M	00-0A-F4-D5-8D-41	
7	down	down	propPointToPointSerial	1500	Serial0/1	1544k		
8	up	up	other	1500	Null0	4294967295		
11	up	down	ppp	1500	Virtual-Template1	128k		
14	up	down	75		BRI0/0-Physical	144k		
15	up	5	63	1500	BRI0/0-Signaling	16k		

NetLight reference

- Molim kontaktirajte me...

Pitanja



- Kontakt:
www.netlight.com.hr
goran.car@netlight.com.hr
- Distributeri:
 - Combis
 - Nove tehnologije